

KOLBIE

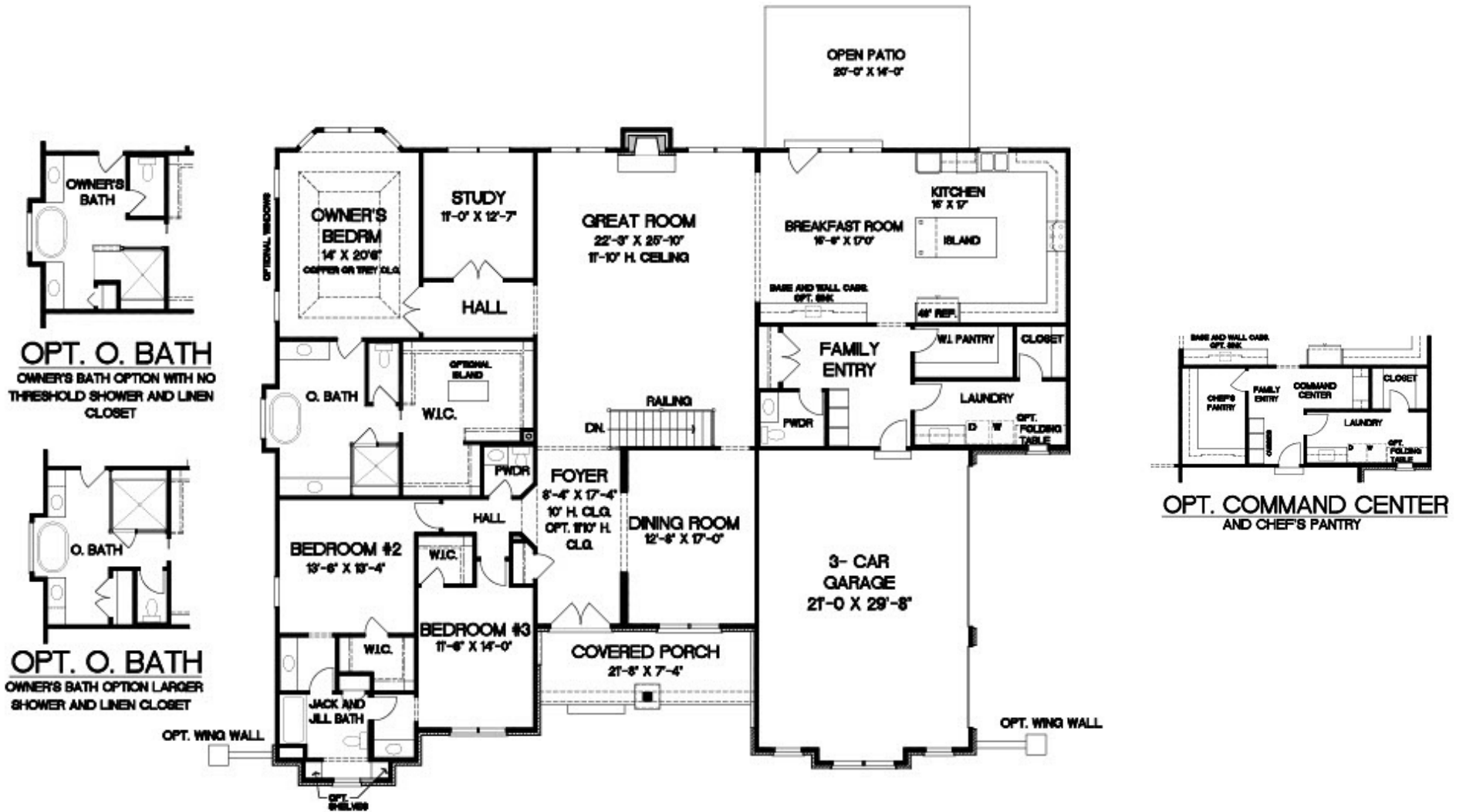
RANCH

3600 Square Feet on Main Floor, with additional Lower-Level Finish,
4 Bedroom, 3 Baths, 2 - ½ Baths, 3-Car Side Entry Garage, Floor to ceiling Masonry Fireplace in Great Room,
12' ceiling in Great room, 10' ceilings throughout remainder of the main floor, Spacious Owner's Suite,
10' Foundation Pour. Lower level features a Wet bar and Rec Room.



KOLBIE RANCH

Ingrade Homesite



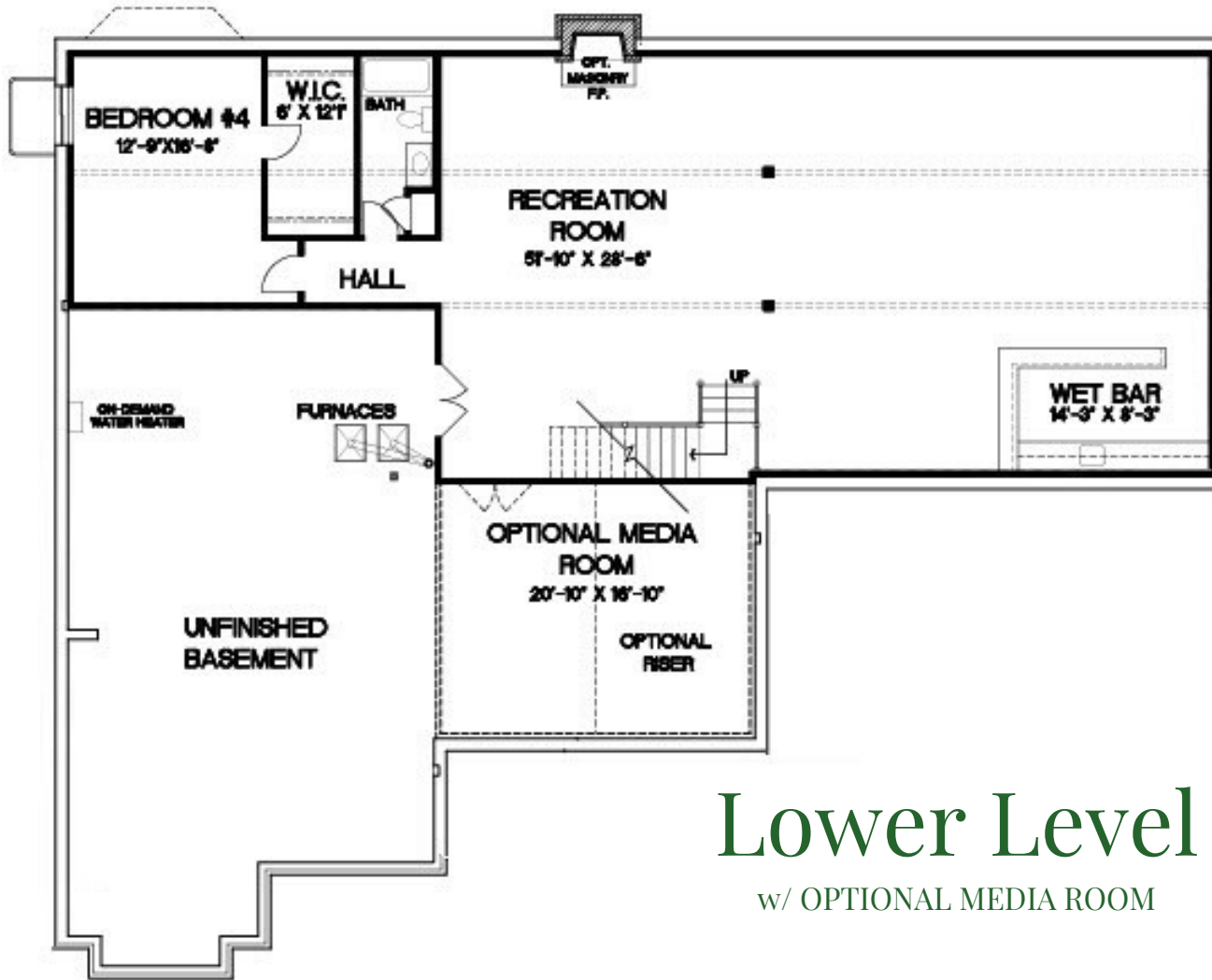
First Floor

In an effort to continually improve our product, we reserve the right to make changes without notice. This is an artist's conception and should not be used for constructing the home. Due to the evolutionary changes in our design process, there may be variations in room dimensions, door swings, and window and door locations. Copyright 1-17-23



KOLBIE RANCH

Ingrade Homesite



Lower Level

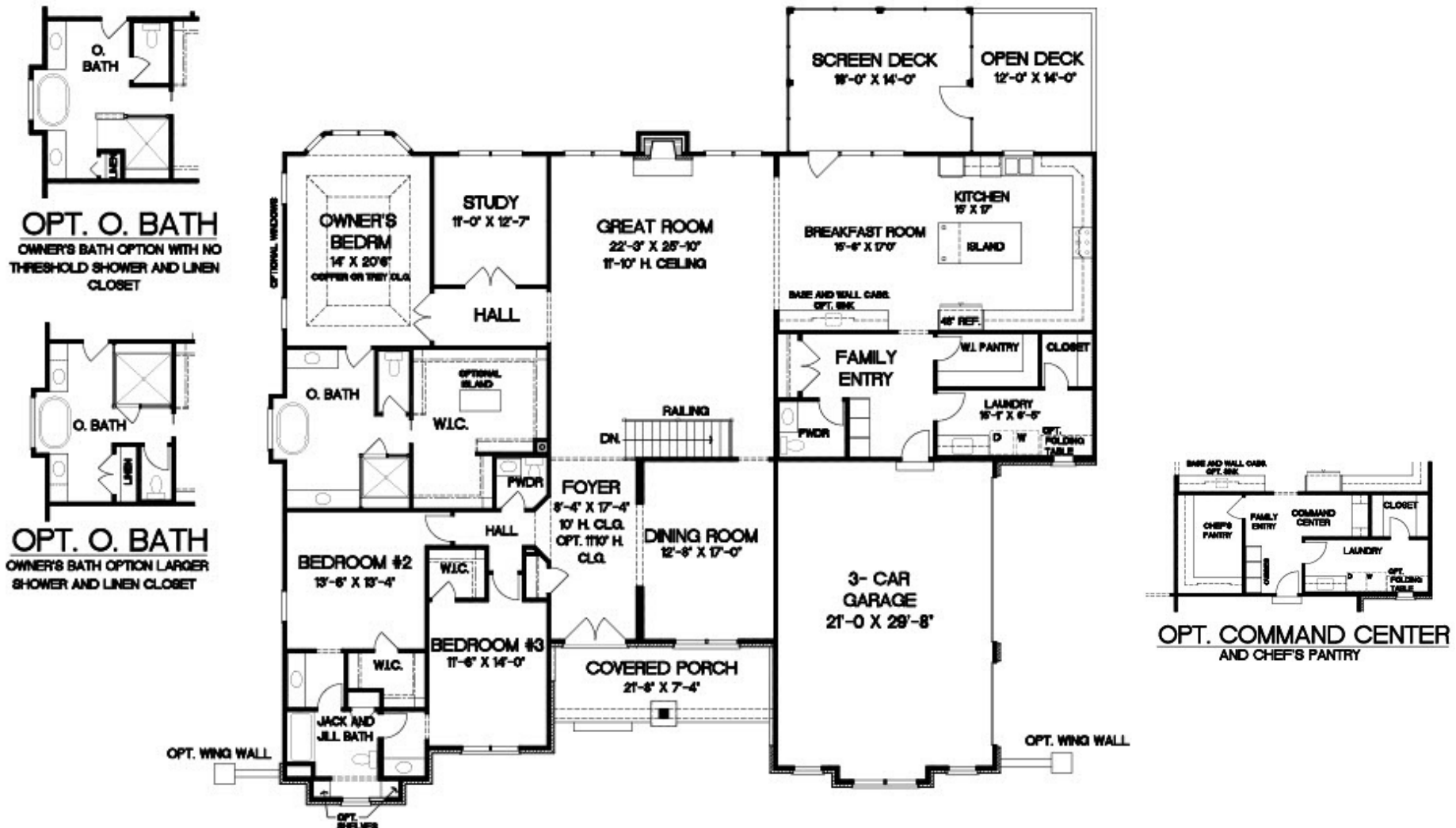
w/ OPTIONAL MEDIA ROOM

In an effort to continually improve our product, we reserve the right to make changes without notice. This is an artist's conception and should not be used for constructing the home. Due to the evolutionary changes in our design process, there may be variations in room dimensions, door swings, and window and door locations. Copyright 1-17-23



KOLBIE RANCH

Walk-Out Homesite



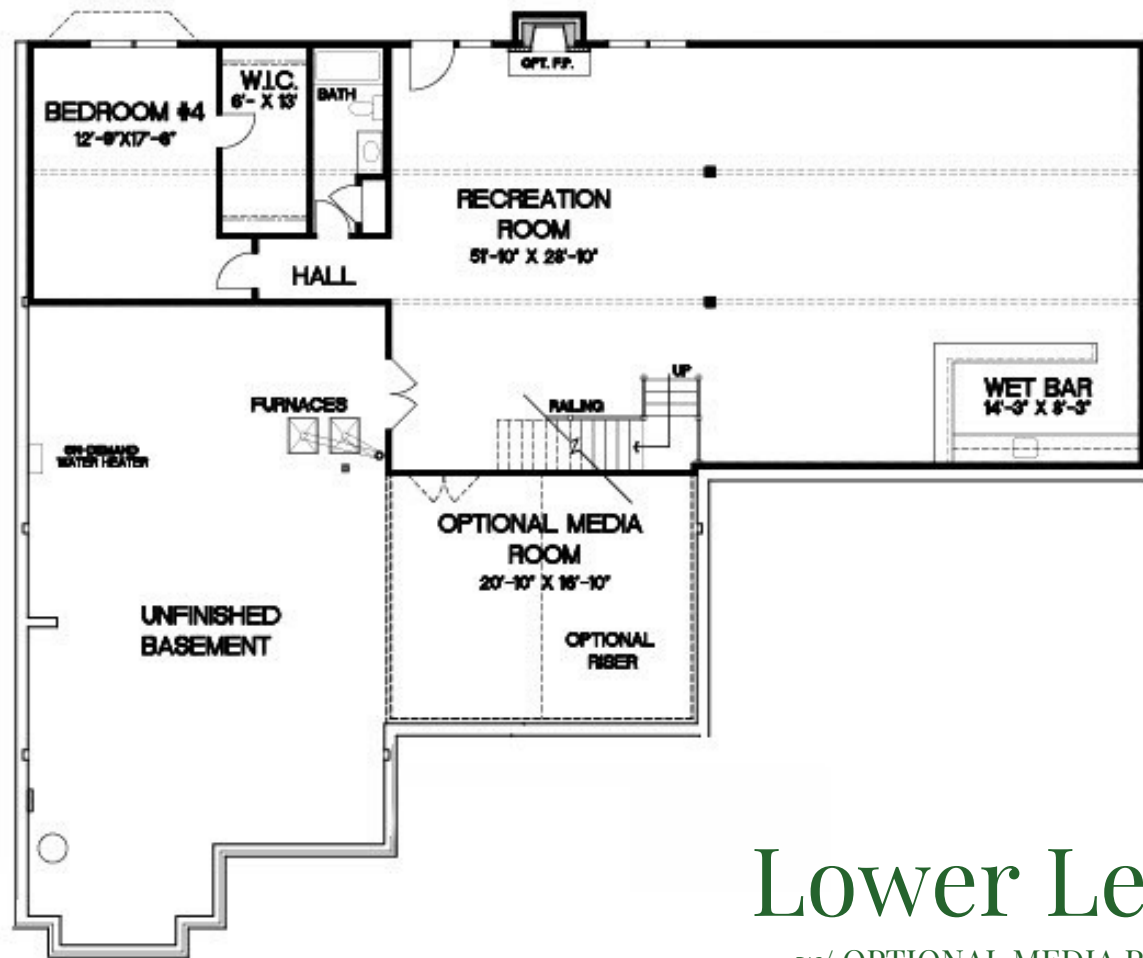
First Floor

In an effort to continually improve our product, we reserve the right to make changes without notice. This is an artist's conception and should not be used for constructing the home. Due to the evolutionary changes in our design process, there may be variations in room dimensions, door swings, and window and door locations. Copyright 1-17-23



KOLBIE RANCH

Walk-Out Homesite



Lower Level

w/ OPTIONAL MEDIA ROOM

In an effort to continually improve our product, we reserve the right to make changes without notice. This is an artist's conception and should not be used for constructing the home. Due to the evolutionary changes in our design process, there may be variations in room dimensions, door swings, and window and door locations. Copyright 1-17-23

